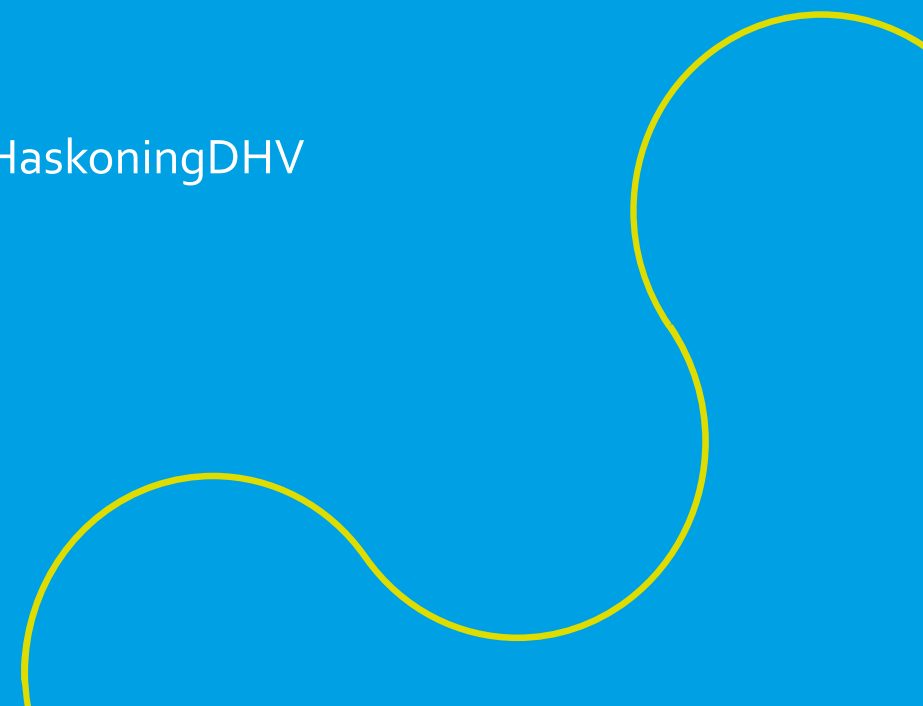


Bijeenkomst Common Data Environment vanuit bouwdelta groep

CDE in Praktijk, Erik Lanthers, Royal HaskoningDHV
28 juni 2021



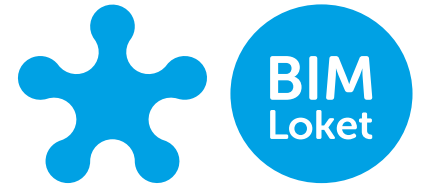
Wie / Wat / Rol

Erik Lanthers



- IT & BIM Consultant
 - Cloud Adoption
 - Informatie manager IT
 - ISO 19650
 - BRE & BSi gecertificeerd
 - Project Consultant

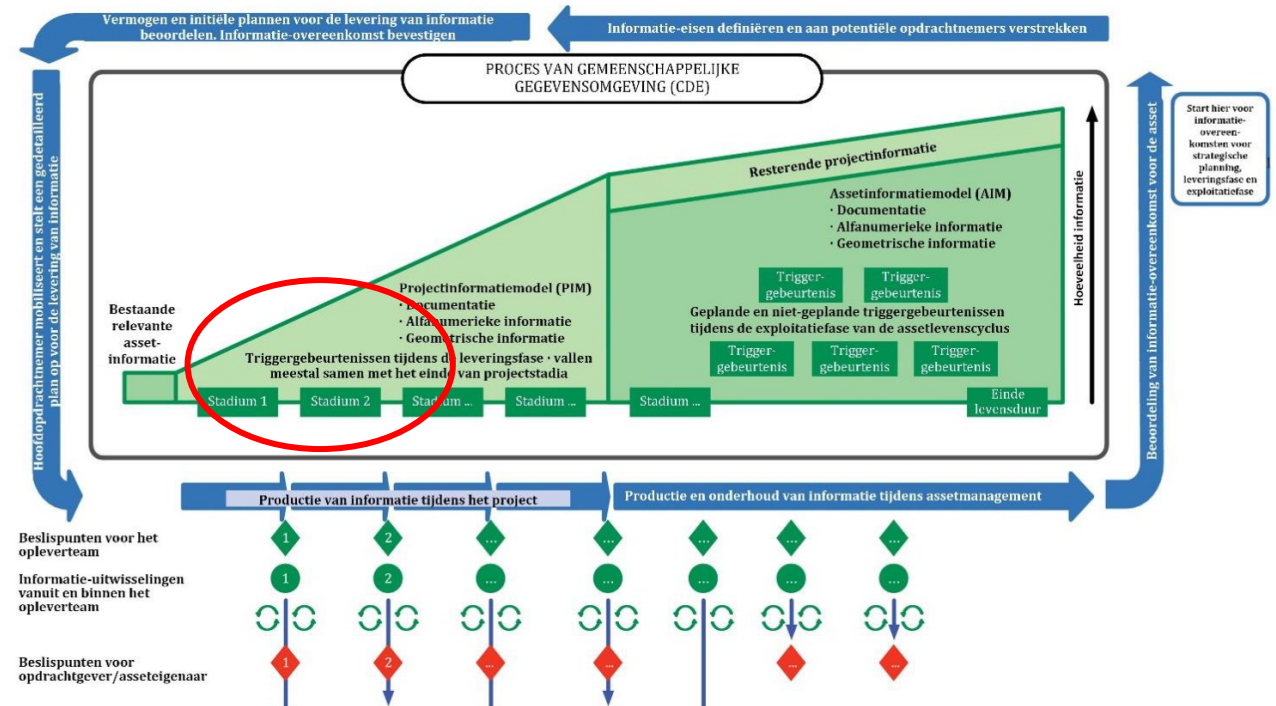
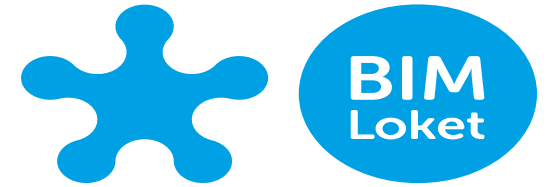
www.linkedin.com/in/eriklanthers



Waar werk je?



- 5,500 mensen
- Kantoren in 30 landen
- 6 business lijnen; Industrie, bouw, wegen, water, (lucht-)havens e.a.
- In 2021: 140 jaar bestaan
- 70% projecten <100k
- 30% projecten >100k
- 6,000 operationele project CDE's per jaar
- Deze maand opnieuw ISO 19650 gecertificeerd



Onze CDE Route

OOK niet gebouwgericht (documenten)

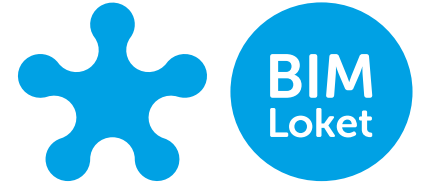
2016 PAS1192 awareness

2018 Afspraken toegepast in DMS

2019: CDE Policy:
Dezelfde aanpak voor ieder project
Integratie pogingen

2021: Evaluatie

2022: Ambitie: Fit for Purpose



● Uitdagingen

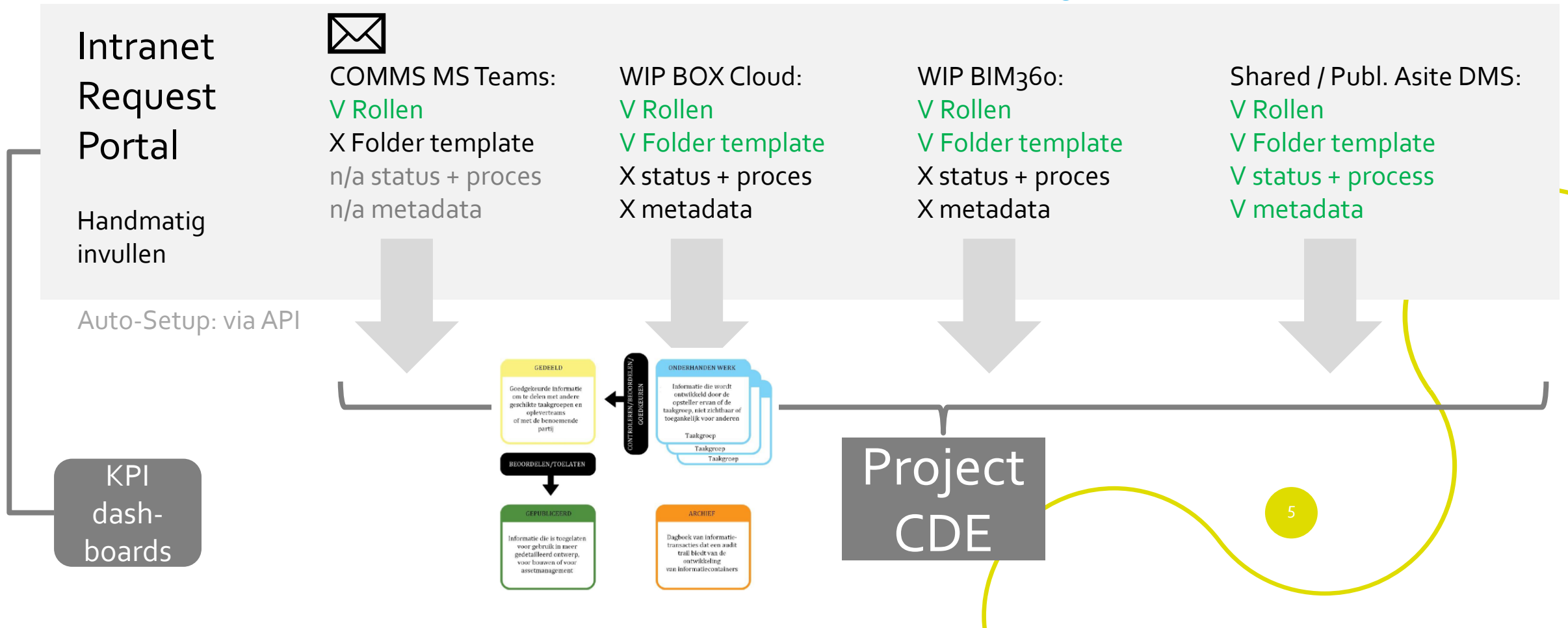
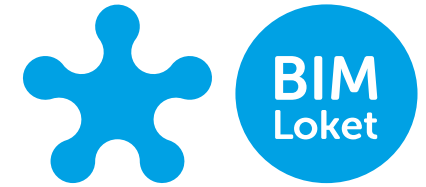
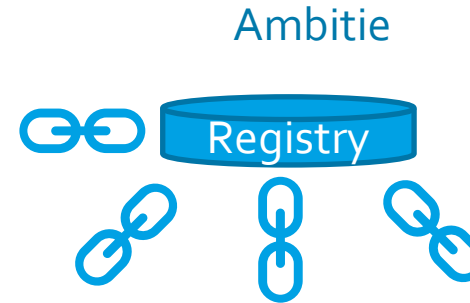
Intern: Document gerichte projecten: What's in it for me?

Extern: Moeilijk om klant in CDE te laten acteren

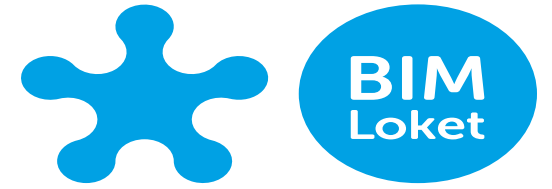
IT: Lastig processen over applicaties heen te laten lopen

Hoe richten wij project platforms (CDE) in?

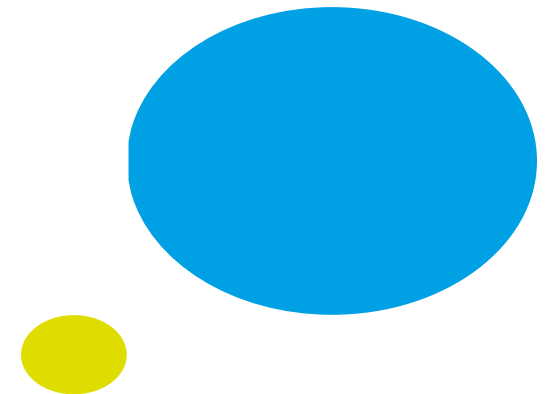
- Platforms selected
- Files to be delivered



Demo



- Online BEP Tool, in-house development Royal HaskoningDHV
- How to interact between WIP and Shared / Published DMS



Vragen?

